



COOKING PASSION SINCE 1877

Lets create  
amazing dishes

NEFF Inspiration Guide

NEFF INSPIRATION GUIDE 2022



## Welcome to NEFF.

At NEFF we believe that the kitchen is the heart of the home. It's where you get creative, spend time socialising with family & friends and it's an important space to get just right.

This inspiration guide is here to introduce you to NEFF's innovative range of appliances which are all designed to help you be your best creative self in the kitchen. It gives an overview of all things NEFF and will inspire you with ideas on how to plan your perfect kitchen, designed around you and your cooking style. Each page has a QR code to take you to see the full range online and gives further information for each category.

If you want to have a go at designing your perfect kitchen that you can take and show to a kitchen designer, our NEFF Virtual Brochure can help you plan and configure your space.

# MORE SPACE FOR CREATIVITY



SEE THE VIDEO



**SLIDE&HIDE®**  
THE ONLY OVEN WITH A  
DISAPPEARING DOOR.

# A kitchen for those who love cooking


## The perfect kitchen for EVERYONE.

Enhance your kitchen experience, set up and control your appliances with ease, personalise the display and responses to your liking. Home Connect helps you use your appliance to its maximum potential, receiving helpful tips and hints via your phone or tablet, including when your oven has reached temperature. With the Home Connect app, you can manage and set up your appliance routines that support you in the kitchen.

NEFF's range of appliances include key features that makes them the first choice in an accessible kitchen. As part of the NEFF appliance range, within each category there are appliances suited to an Accessible kitchen and those appliances fitted with the smart technology.



**FIND OUT MORE**

 Home Connect



# How do you like to cook?



### For the social chefs

Featuring our unique CircoTherm® technology, NEFF ovens are perfectly designed for busy family life and sociable dining. With the option to cook different dishes across all four levels without any intermingling of flavours, each course can be cooked at the same time.



### Creative cooks

Our stylish Creative Slim Hood illuminates your space in ambient lighting whilst quietly keeping your room free from steam and odours. Use the writeable surface to jot down flashes of inspiration or attach recipes to the magnetic board.



### The traditional way

For traditionalists who prefer to see exactly how much heat is delivered to their pans, gas cooking provides a robust and reliable way to prepare your favourite dishes. You can control your hob by numbers and not by eye with our precise and responsive FlameSelect® heat control feature, available across selected gas hobs.



*Complete flexibility so you are not held back*

### Versatile cooking

Our domino hobs can be mixed and matched to create a cooking station that's all your own. With gas (30cm), Quick-Light ceramic (30cm), FlexInduction (30cm) and Teppan Yaki (40cm) hobs within the range, our Domino hobs can be linked to provide the ultimate versatile cooking experience.



# Need ideas? We've got you covered.

## NEFF Inspiration Hub


Discover our range of helpful articles and guides, including:

- Kitchen designs from our NEFF customer community for real-life inspiration. #MYNEFFKITCHEN
- Quick and useful links for appliance information
- Installation ideas that make the best use of your kitchen space
- Expert advice as kitchen designers take you through projects they have worked on
- Delicious Neff recipes to get the most out of your NEFF appliance



**SCAN HERE  
FOR IDEAS**



NEFF  Home Connect

# Don't miss out on lifes big moments



## Enhance your cooking with NEFF and Home Connect

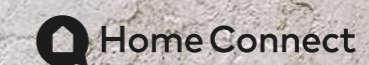
Enhance your kitchen experience, set up and control your appliances with ease, personalise the display and responses to your liking. Home Connect helps you use your appliance to its maximum potential, receiving helpful tips and hints via your phone or tablet, including when your oven has reached temperature.

## *Focus on your guests, the food is in safe hands*

## Start cooking with the app and get notified when dinner is ready

For many cookaholics, talking to their oven comes naturally. With your hands full kneading dough and rolling it out for tagliatelle, it's more than handy to start the oven and select the relevant cooking function hands-free via voice control. Our oven can talk back too: with Home Connect you can expect to receive a notification directly to your smartphone when dinner is ready. So you can focus on entertaining your guests. Being able to see all heating modes with a simple tap means you can pick the

right method to suit your recipe. You can even create a favourite mode for a fast short cut, brilliant for those mid-week dinners when time is of the essence.



# Create your perfect cooking setup

It's a thing of beauty



FIND OUT MORE

## Modern and sleek display types to suit you

The NEFF Collections give you three appliance ranges, designed to help you build a kitchen that perfectly suits your unique culinary and aesthetic style. N 50 is crafted for passionate cooks, N 70 caters to more serious chefs, while N 90 takes things to a more gourmet standard.

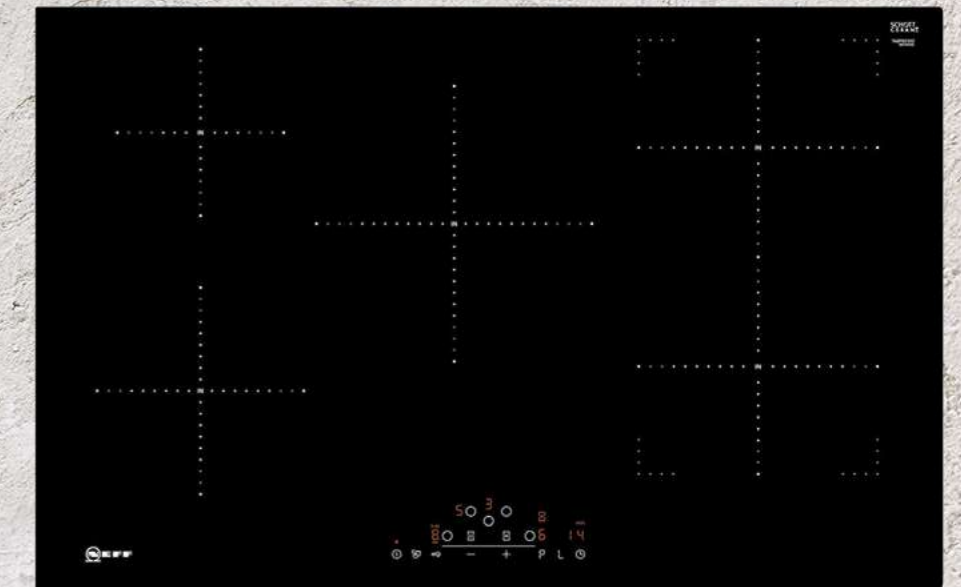
Within each Collection, you can also piece together your own unique combination - use the collections as a guide to features and display to ensure a perfect match.



Full Touch Control display; 5.7" high resolution TFT colour graphics display

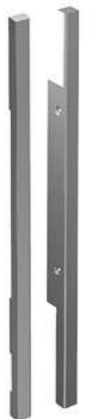
## Flushline hobs for a completely flat surface

Cooking is all about creativity and individual taste, so our range of hobs have been specially designed to cater to all cookaholics. If you're looking for flexibility, an electric hob might be what you're after. Or pick one of our powerful gas or fast induction hobs. Can't decide? Then the domino range might be the best hob for you. This model shown here is from our Flushline range - it's installed seamlessly into the worktop for a sleek finish.



## SeamlessCombination® – Mix and match your appliances

Create your perfect kitchen by choosing your very own appliance combination and cooking features to suit your lifestyle. With our SeamlessCombination® strips you can seamlessly combine our N 90 and N 70 Collection of single ovens and compact appliances to create a sleek and stylish finish.



*Beautiful seamless finish*

# The unsung heroes behind the door

Whether it's washing dishes, lightening the laundry load or keeping your food as fresh as possible, NEFF have appliances to make life easier. NEFF's integrated appliances do all the hard work behind the door so you don't have to; working tirelessly and quietly in the background, you can enjoy getting creative in the kitchen with friends and family... carefree.

**Laundry** *Designed to fit into your lifestyle*

**Dishwashing** *Bubbled-over oven dishes, baked-on ramekins and caramelised pans – All come out beautifully clean*

**Cooling** *Keep your ingredients at their freshest*



# A NEFF oven to suit every cooking style

Our ovens are designed by cooks, for cooks. We're proud of our strong aesthetic values and our ovens look as great on the outside as they work on the inside. But what makes NEFF stand out is our commitment to providing a better cooking experience.



Visualise your cooking space with the help of the Neff Virtual Brochure. Scan here to download.

## NEFF Ovens - Endless possibilities

If you're passionate about cooking, then your oven will be an integral part of daily life. Our single and double ovens come with a range of features allowing you to get creative in the kitchen. Our unique Slide&Hide® disappearing door is also available on a wide range of our single ovens.



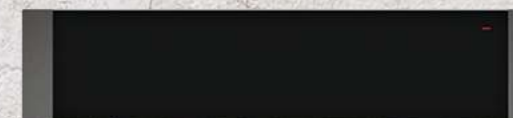
## Compact Ovens - More room for your ideas

Designed to offer the ultimate flexibility, our compact appliances provide all of the innovative features you'd expect from a NEFF Single Oven. With CircoTherm® as a standard and Pyrolytic Self-Cleaning available with selected models, our small ovens have big ideas.



## Warming Drawers - Integrated convenience

NEFF drawers offer versatility and convenience in the kitchen. With a variety of different uses, you can warm up your cookware, prove dough, defrost, melt chocolate or even slow cook a shoulder of lamb.



# Unlocking your cooking potential

## Slide&Hide® – Get closer to your cooking

We create appliances that are tailored to modern lifestyles and requirements. Our unique Slide&Hide® door fits smoothly under the oven cavity to give plenty of room, as well as better access to the oven's interior – ensuring an easy and flexible approach to cooking. Recognising our customers' need for maximum cooking space, our unique full-sized single ovens have a large 71-litre capacity.

Selected Slide&Hide® models are now available with a choice of:



## Meat Probes – Even the best sometimes need a little help

Take the guesswork out of cooking joints of meat with our clever built-in temperature probe feature. Available within the N90 Collection, the Multi Point Temperature Probe measures the joint's heat at three points to ensure it's perfectly cooked throughout. Offered within the N50 Collection is our Single Point Meat Probe that monitors the core temperature of your joint and automatically switches the oven off when it's ready to be served.



## Pyrolytic Ovens – The oven that almost cleans itself

When you activate the Pyrolytic Self-Cleaning cycle, high temperatures of up to 485°C turn baking, roasting and grilling spatter and residue into dust. Once the oven has cooled you can simply wipe it away with a cloth. That's all there is to it!

With the stylish and innovative Slide&Hide® Single Oven available with Pyrolytic Self-Cleaning, cleaning up those little spills won't eat into your dining time. From bubbled-over cheese to sizzling joints of meat, spatter and spillages are simply turned to dust, allowing you to quickly wipe away any residue once the oven has cooled.

## ComfortFlex® and ClipRail® Telescopic Rails

Lift hot dishes safely and comfortably out of the oven using our ComfortFlex Telescopic Rails, available within the N90 Collection. With the new design the rails don't get in the way – you can grasp the tray or dish from the side for more safety when handling.

Offering a similar benefit of allowing food to be pulled clear of the oven for optimum tasting and basting, our ClipRail Telescopic Rails feature a clip to release functionality and are available within our N50 Collection. You can also position our ClipRail Telescopic Rails on any level in the oven.



## Cook a three-course meal in one go without intermingling flavours

### CircoTherm® – Simultaneous cooking on multiple levels

With CircoTherm® you can cook, roast and bake completely different dishes on all levels and everything will come out tasting like it's supposed to. With no intermingling of flavours, the roast meat will taste like roast meat, and the muffins will taste like muffins. With flat items like cookies you can bake them using all four levels.



# A hob to compliment every cookaholic

Choosing the right hob to complement your kitchen and cooking style can be challenging. At NEFF we understand the importance of creating a premium, seamless kitchen with appliances that are designed to coordinate with one another. To help you select the perfect kitchen companion, we've categorised all our hobs into easy-to-follow Collections based on product features, control display and design.



## Don't let your hob hold you back

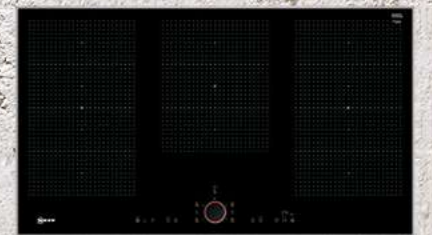
A great meal is all about the ingredients and cooking process. And it's the same when it comes to choosing the right hob. If you want flexibility, an electric FlexInduction hob might be what you're after. Or pick one of our innovative gas or fast induction hobs. Can't decide which one? Then the Domino range might be the best hob for you, as it mixes all of the above. There's a NEFF hob for anyone to get creative with.

Our different hob types come in a range of styles and finishes to compliment your style and kitchen design.

### Venting Hobs



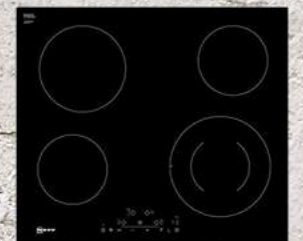
### Flex Induction Hobs



### Induction Hobs



### Ceramic Hobs



### Domino Hobs



### Gas Hobs



# Flexibility at your fingertips

## TwistPadFire® – Innovation in flexible cooking

Featuring a unique, illuminated and removable dial, our TwistPadFire® control feature has been designed to react to pans bubbling away quickly and easily. Simply point and twist the clever magnetic dial towards your cooking zones to activate and adjust the heat accordingly.

Available with selected FlexInduction hobs, TwistPadFire® makes controlling your hob easier, and more stylish, than ever before.

TwistPadFire® – our removable, magnetic, illuminated control dial has the dual benefit of ease of control & safety feature.

Available on selected FlexInduction and Venting Hobs.



## Frying Sensor

This function can be used to fry food while maintaining the suitable frying pan temperature.



## Power Move

Divide the hob into three heat zones, each with a different power level so you can easily move a pot between intense heat at the front, simmering in the middle and a low, keep-warm temperature at the back.

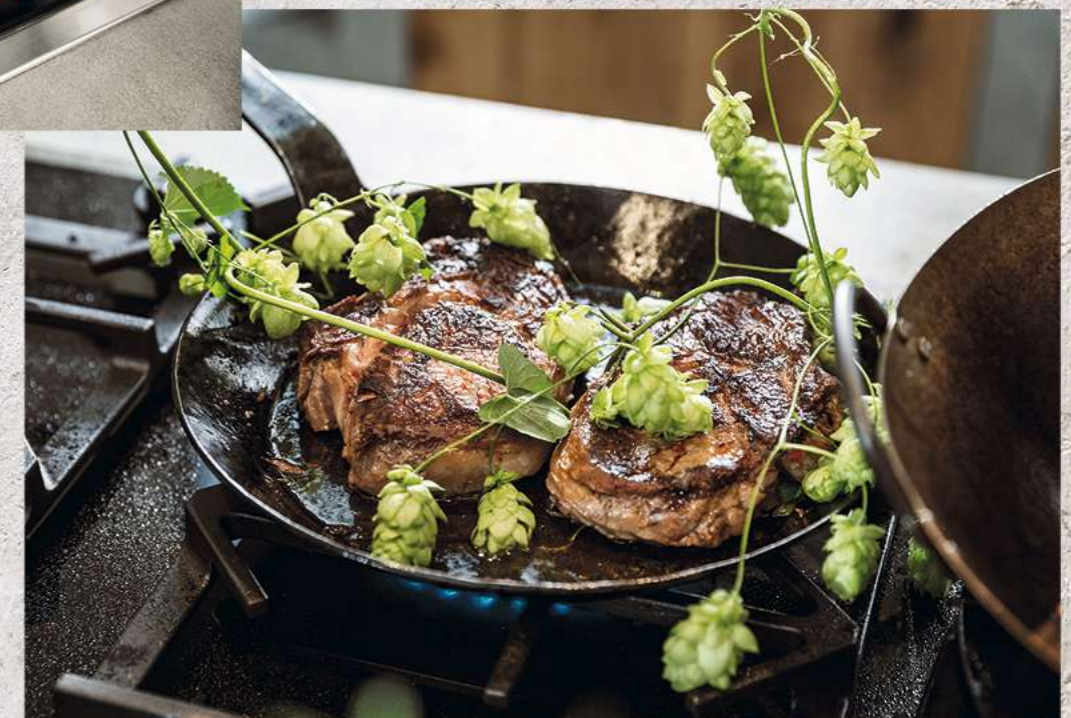


## FlameSelect®

With FlameSelect®, the gas flame adapts to the dish and not the other way around. Whether you're searing a steak, boiling pasta, or simmering a roast, you can set the heat just as you would with an electric hob. Select one of the 9 heat levels available and you can see how the flame becomes larger or smaller just as you need it. For the first time ever, cooking with gas is as easy as cooking on an electric hob.



*Gas cooking has never been more precise*



SEE ALL FEATURES

# The finishing touch to your kitchen

NEFF hoods are designed to cater for every cookaholic's kitchen. Efficient, quiet and equipped with features such as built-in ambient lighting, the design and placement of your hood can be as flexible and stylish as your living space.



SEE THE RANGE

## Island solutions

If you like a contemporary-styled kitchen with an island cooking area, our island cooker hoods can add an inspiring focal point. A kitchen island, being in the centre of the kitchen, provides a hub for cooking, entertaining and socialising in one of the most used rooms in the home.



## Worktop solutions

If you're looking for powerful ventilation without disturbing anyone while preparing meals, our DOWNDRAFT HOOD is a great choice. Devised for kitchen islands, it coordinates beautifully with our induction hobs. The DOWNDRAFT HOOD is simply built into your worktop or kitchen furniture. Rising at the touch of a button, it gets to work quietly and effectively.



## Ceiling solutions

With our ceiling installation cooker hoods, the hobs can be accessed from all sides. Many of these hoods feature Home Connect Smart Technology and let you control the ventilation from the hob or using a voice assistant, as well as a conventional remote.



## Wall mounted solutions

Hoods installed on the wall can be used to create a design feature in themselves, adding a focal point to your kitchen while offering powerful extraction for all types of cooking. Choose from a range of styles to suit your kitchen design, including the trendy Creative Slim hoods or Angled Glass hoods with features such as Ambient Light that let you express yourself with colour, as well as your cooking.



## Integrated solutions

When cooking up a meal for friends and family the last thing you want is the noise of a hood in the background. Our integrated furniture hoods are built to operate on low noise levels while maintaining high air quality in your kitchen.



## Powerful yet quiet

It's amazing when a steak is sizzling in your pan, and the smell is part of an exciting cooking experience. But excessive moisture and mixed odours can be unpleasant. Enter our quiet but powerful extractor hoods. Choose between different sizes and models - fresh air is guaranteed.

Our cooker hoods come in a range of designs from seamless models that will blend effortlessly into your kitchen, to bold and striking hoods that will be a focal point. NEFF cooker hoods come with easy-to-clean metal grease filters as standard. Every once in a while, you can simply pop them into the dishwasher and continue to enjoy the fresh and clean air.



### Ambient Light – lighting to compliment any kitchen light setup

Illuminate your kitchen in the light that suits the occasion best with our new ambient light feature. With many of our extractor hoods incorporating energy-efficient LED lighting, creating a warm, inviting space is always part and parcel of a NEFF kitchen. With a welcoming ambience and quiet extraction, our hoods are designed with sociable kitchens in mind. With the power to ventilate even the most spacious open-plan living areas, odours and steam are effectively eliminated without extraction noise drowning out the conversation.

### Hob Hood Control

Being able to control the hood directly from the hob means the hood turns on when you start cooking and, in automatic mode, can automatically regulate the power level for the best performance with the lowest noise – it also means you no longer need to worry about adjusting the hood and you can focus on your cooking. Connected appliances can also be controlled using the Home Connect app – ideal if reaching the panel is an issue.



## Conversation without the distraction



### Efficient Drive Motor – don't drown out your conversation

Save energy and enjoy a noise free, illuminated kitchen environment thanks to our ultra-efficient high-speed extractor hood fan, with Efficient Drive motor technology and LED lights.

Most of our hoods are exceptionally quiet thanks to our brushless Efficient Drive Motor. However, noise is also determined by the length and type of

ducting used and the installation surroundings. To provide a more meaningful measure of noise specific to the appliance, we state Sound Power in dB(A) re 1pW. With this system, there are strict guidelines for measuring the noise level, enabling you to easily compare our range and to give a closer indication of likely noise levels once the hood is installed.

# Lets keep it fresh

Fresh, seasonal ingredients are a staple in any NEFF kitchen. That's why the right food storage is so important: all our fridges and freezers - whether it's a large American-style appliance that can cope with the demands of a hungry family, or a built-in model that integrates seamlessly into the kitchen furniture - give you the flexibility to keep your fruit, vegetables and herbs crisp and vibrant for longer.



SEE THE RANGE

## Built-In Fridge/Freezer



Designed to fit in a single housing unit, our range of fridge freezers include models from the tall larder style to more compact styles. All of our fridge freezers have a 4 star rating.

## American-Style Fridge/Freezer



It's big, bold, and there's enough space for even the largest family's chilled and frozen food. You'll also find an ice and water dispenser to keep you cool all year round.

## Built-Under Fridge & Freezer



Our integrated fridge with a four star freezer fits neatly under the work surface and provides a compact, flexible cooling solution for busy kitchens.

## Built-Under Wine Cabinets



Keep wine comfortably stored at the ideal drinking temperature. This ensures the joy of a delicious meal by offering an optimal taste experience through and through - namely by fantastic food and exquisite wine.

# Helping you live the easy life



SEE ALL FEATURES

Cooking is all about new ideas and fresh inspiration – and our cooling appliances are no different. They are bursting with innovative features and functions to optimally store the food you love.

## Easy Clean Magnetic Door Seals

The magnetic door seals on all of our refrigeration range are removable, making them easy to clean and/or replace if necessary.



## Easy Lift Shelf

With Easy Lift shelving, it's possible to adjust shelves with just one hand – even when they're fully loaded. Perfect when unloading shopping or introducing freshly prepared dishes to the fridge.



## Easy Access Shelf

The retractable glass shelf allows for easy loading and unloading as well as better access to your food. Ideal for putting the finishing touches to those delicate desserts.



## Easy Lift Door Storage

Easily adjust door storage with just one hand. Combined with Easy Lift Shelves, your fridge space won't restrict your favourite foods and drink.



## Vario Shelf

Designed to offer complete flexibility in your fridge, sectioned glass shelves can simply be separated and slid underneath when not in use. Ideal for larger dishes, with space left over for a convenient condiments storage area at the back.

*Create your perfect configuration*



## Bottle Rack

Always have a chilled bottle on standby for those impromptu get-togethers.



# Discover your ideal fit

When you've got the exact look you want for your kitchen, NEFF Built-In Dishwashers are a great solution. With flexible features and a programme for every occasion; from Chef 70° for very dirty dishes to Auto, you can count on glistening results. Hidden away under counters or in tall cupboards for an eye-level option, these will be your kitchen's best-kept secret.



SEE THE RANGE



## N90 – Touch Control with TFT Display

- 60cm Fully Integrated
- 81.5cm Height



## N70 – Touch Control with LED Display

- 60cm Fully Integrated
- 81.5cm Height



## N50 – Touch Control with TFT Display

- 60cm Fully Integrated
- 45cm Fully Integrated
- 81.5cm and 86.5cm Height



## N30 – Touch Control with TFT Display

- 60cm Fully Integrated
- 60cm Semi-integrated
- 81.5cm Height



## Create your optimum setup with Rack-matic

Rack-Matic allows the top basket to be raised or lowered into three different positions. With the option to adjust the basket even when fully loaded, those last minute wine glasses can still go in at the end of the night. The top basket can also run on an angle, using two different heights either side which helps moisture drain away, aiding the drying process.



## Let the floor do the talking

Info Light projects a red light on the floor below your dishwasher which indicates the machine is still running. Available across selected models, Info Light will stylishly project onto any kitchen floor.

Time Light projects the remaining time of the dishwasher cycle and other information onto the floor in front of your machine. Stylish, contemporary and practical, there's no risk of disrupting your wash. The end-of-cycle sound can also be turned off, handy for open-plan living.

## Care for your most delicate glassware

Your dishwasher has a thing for delicate glassware, so it fine-tunes the water hardness to protect your glassware with never-ending care. A combination of the **Glass 40° programme** and **Extra Shine** option will clean your items impeccably without worry. With the introduction of anti-slip surfaces, silicon inserts and supports within Flex 2 baskets your glassware has never been more protected:



## The ideal choice for seamless kitchens

Door Open Assist is the perfect solution for anybody looking to achieve a sleek, handleless design in their kitchen. Simply press lightly on the front of the unit to open the dishwasher door. Ideal for a range of integrated designs, Door Open Assist is also a convenient addition to busy kitchens. Electronic child lock can be activated, creating a double push to open.



*Don't compromise on your beautiful kitchen*

# Making light work of laundry

A good laundry appliance should be reliable enough to provide perfect results again and again. We have three types of model to cover all your laundry needs: washing machines, washer dryer combination models and tumble dryers. All feature our signature innovations, designed to improve efficiency and, most importantly, to make life easier.



## Time Light

The time remaining of the wash cycle is clearly projected on to any floor surface. So you don't have to open the door to see when your washing will be finished. Perfect for open plan kitchens. Featured on model W544BX1GB.



*Feel fresh for those dinner parties*

## Reload Function

If you need to add or remove an item after the programme has started, you can pause the cycle by pressing the Start/Reload button. The machine will check whether you can open the door and, if so, it lets you. To resume operation, just press the Start/Reload button again.



COOKING PASSION SINCE 1877

# Create. Inspire. Delight.

## COLOUR ILLUSTRATIONS

Due to variables in photographic and printing processes, all colours in this brochure are subject to deviation from the appliance actually illustrated.

## IMPORTANT NOTES

This brochure is current as from the publication date and supersedes all previous brochures for these products. This brochure should not be regarded as an infallible guide nor as an offer for sale of any particular product. Whilst BSH Home Appliances Ltd believes that all information contained within this brochure is correct at the time of going to print, no representation or warranty, express or implied, is or will be made and no responsibility or liability is or will be accepted by BSH Home Appliances Ltd in relation to the accuracy or completeness of this information and any liability is expressly disclaimed. To the extent permitted by law, BSH Home Appliances Ltd expressly excludes: i) all conditions, warranties and other terms which might otherwise be implied by statute, common law or the law of equity and ii) any liability for any direct, indirect or consequential loss or damage (including, without limitation, damages for loss of business or loss of profits) arising in contract, tort or otherwise from the use of or reliance on any information contained within this brochure or from any action or decision taken as a result of such use or reliance. BSH Home Appliances Ltd reserves the right to modify technical data and all other information contained within this brochure without notice. All rights reserved. Due to variables in the reproduction process, colours of actual products may vary slightly from those depicted. We recommend a visit to a NEFF dealer to confirm that specifications and colours are to your satisfaction.

All photography and copy in this brochure are the property of, or under licence to, NEFF and must not be used without prior permission. Please contact the NEFF Marketing Department for assistance.

Slide&Hide®, CircoTherm®, NeffLight®, TwistPad®, FlameSelect®, SeamlessCombination® and TwistPadFire® are trade marks of BSH Home Appliances Limited.

For product specifications please go to [neff-home.com/uk/](http://neff-home.com/uk/) or ask your local retailer.

NEFF Dealers are not agents of NEFF and therefore have no authority to bind NEFF by any express or implied undertaking or representation.

NEFF Customer Service  
Grand Union House  
Old Wolverton Road  
Milton Keynes  
Buckinghamshire  
MK12 5ZR

BSH Home Appliances Ltd.  
M50 business Park  
Ballymount  
Dublin 12  
T 1890 626 041  
[www.neff.ie](http://www.neff.ie)

NEFF, a division of  
BSH Home Appliances Ltd.  
Grand Union House  
Old Wolverton Road  
Wolverton  
Milton Keynes  
MK12 5PT  
[www.neff-home.com/uk](http://www.neff-home.com/uk)

NF4900 NEFF Appliance  
Range Brochure 2022

